

INTERNATIONAL
HOUSE





CENTRAL LONDON'S ONLY MARINA



5.94m

PEOPLE COME TO ST. KATHARINE DOCKS EVERY YEAR

6,500

PEOPLE WORK AT ST. KATHARINE DOCKS

525,000 sq ft

CAMPUS

9,000 - 60,000 sq ft

AVAILABLE AT INTERNATIONAL HOUSE



WELCOME TO
INTERNATIONAL HOUSE



THE LOCAL AREA





ON-SITE

- | | | |
|----------------------|---------------------|---------------------------|
| 1 Xi Bar and Lounge | 10 Café Rouge | 18 Emilia's Crafted Pasta |
| 2 The Tower Hotel | 11 Natural Kitchen | 19 Zizzi |
| 3 Vicinity | 12 Honest Burger | 20 SKD Café |
| 4 F45 | 13 The Melusine | 21 The Dickens Inn |
| 5 Cafe | 14 Bravas Tapas | 22 KERB Street Food |
| 6 Côte Brasserie | 15 White Mulberries | 23 Urban Baristas |
| 7 Slug & Lettuce Bar | 16 Kiliky's | |
| 8 Strada Dockside | 17 Traders Wine Bar | |
| 9 Ping Pong | | |

OFF-SITE

- | | | |
|-----------------------------|----------------------|--------------------|
| 1 Browns Butler's Wharf | 12 Tom Simmons | 23 Gaucho |
| 2 Blueprint Café | 13 Gunpowder | 24 Dim T |
| 3 Cantina del Ponte | 14 By Chloe | 25 Coppa Club |
| 4 Le Pont de la Tour | 15 The Ivy | 26 Draft House |
| 5 Butler's Wharf Chop House | 16 Bridge Theatre | 27 Brasserie Blanc |
| 6 Watch House | 17 Vapiano | 28 Mei Ume |
| 7 Café Paradiso | 18 Temakinho London | 29 La Dame de Pic |
| 8 Draft House | 19 The Coal Shed | 30 Bellavita |
| 9 Restaurant Story | 20 Prosecco House | 31 Simmons Bar |
| 10 The Bridge Lounge | 21 Baluchi | 32 Savage Garden |
| 11 Rosa's Thai Café | 22 The Botanical Bar | |



SUPERB CONNECTIONS

BANK / MONUMENT	1 MIN
LIVERPOOL STREET	5 MIN
LONDON BRIDGE	7 MIN
KING'S CROSS ST PANCRAS	13 MIN
VICTORIA	14 MIN
TOTTENHAM COURT ROAD	16 MIN

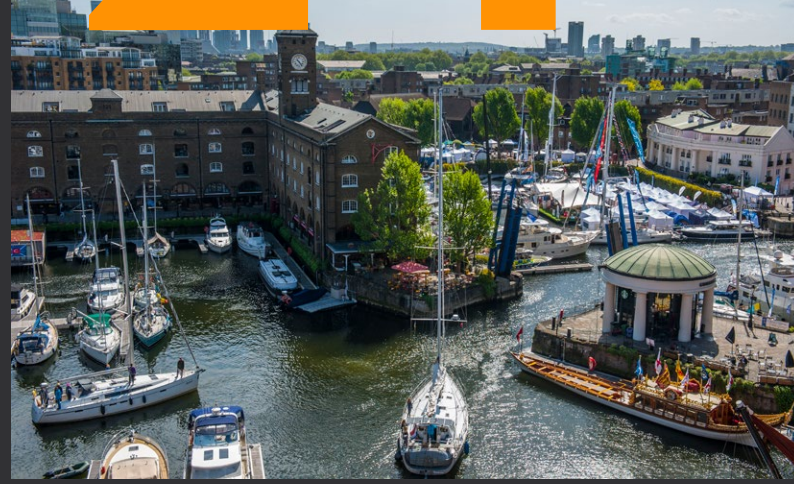
ALL TRAVEL TIMES FROM TOWER HILL STATION
 *TOWER HILL STATION IS A 5 MINUTE WALK FROM INTERNATIONAL HOUSE.



24



RESTAURANT & LEISURE DESTINATIONS



ALL AT YOUR

FINGERTIPS





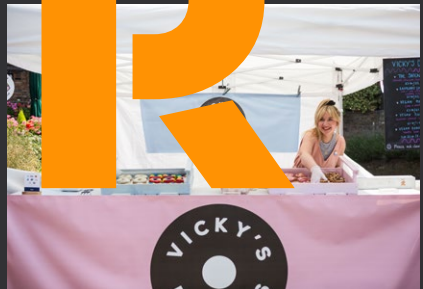
KERB



YOUR



HUNGER





OUTSTANDING

AMENITIES



ON YOUR



DOORSTEP





THE BUILDING

INTERNATIONAL HOUSE

Reception / Breakout

TAKE A 360 TOUR
360°
TAKE A 360 TOUR





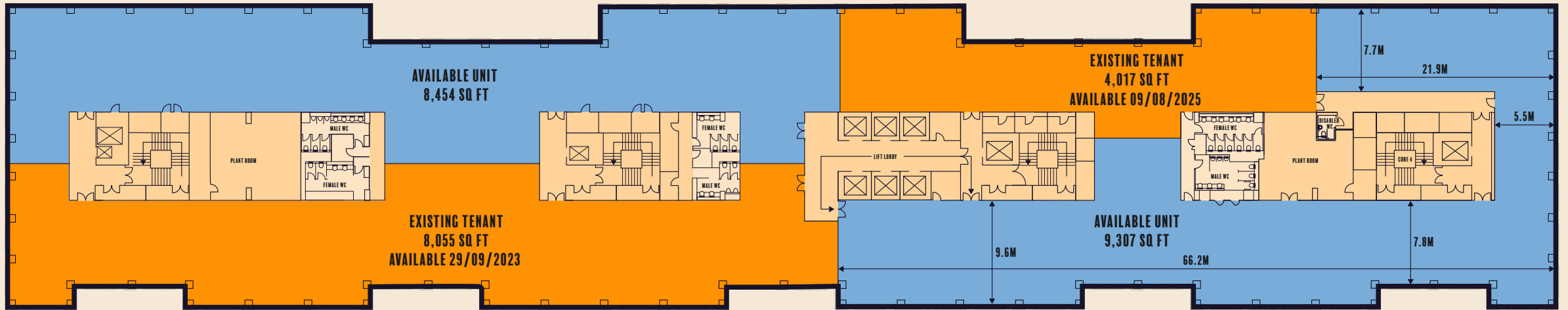
4TH FLOOR

FROM 9,000 - 30,000 SQ FT AVAILABLE



- Available unit
- Core/Lift Lobby/ WCs
- Existing Tenant

Views over the Tower of London



Views over the Marina

Views over the Marina

Views over the Marina





TAKE A 360° TOUR
360°
TAKE A 360° TOUR

A PHOTO OF THE NEWLY COMPLETED 4TH FLOOR



360°
VIEW

TAKE A 360° TOUR
TAKE A 360° TOUR
TAKE A 360° TOUR



A PHOTO OF THE NEWLY COMPLETED 4TH FLOOR



360°
VIEW

INTERNATIONAL HOUSE

View from the 4th Floor

TAKE A 360° TOUR
360°
TAKE A 360° TOUR



INTERNATIONAL HOUSE

WC & Lift Lobby Finishes



INTERNATIONAL HOUSE

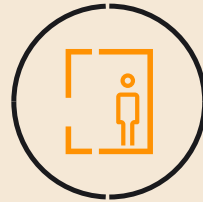
Cycle Storage & Changing Facilities



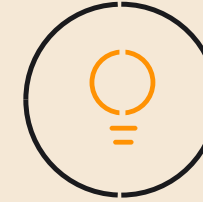
SUMMARY SPECIFICATION



EXPOSED VRV AIR-CONDITIONING SYSTEM



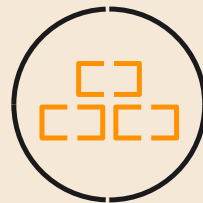
3M FLOOR TO CEILING HEIGHT WITH METAL TILE RAISED FLOOR



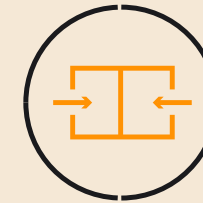
LOW PROFILE FEATURE LED LIGHTING



NEW GLAZING THROUGHOUT



CHARACTERFUL EXPOSED BRICKWORK THROUGHOUT



DUAL ENTRANCE



231 SECURE CYCLE RACKS AND BROMPTON BIKES AND LOCKERS AVAILABLE FOR TENANT USE



MALE AND FEMALE SHOWERS, LOCKERS AND CHANGING ROOMS



WIREDSCORE GOLD CERTIFIED

CONTACT

FOR ALL ENQUIRIES:



James Heyworth-Dunne

+44 (0) 7779 327 071

jhd@inglebytrice.co.uk

Jamie Russell

+44(0) 780 475 238

j.russell@inglebytrice.co.uk

Jake Halstead

+44(0) 798 948 1012

j.halstead@inglebytrice.co.uk



Matt Waugh

+44 (0) 7912 977 980

matt.waugh@cushwake.com

George Homer

+44(0) 758 411 8298

george.homer@cushwake.com

James Campbell

+44(0) 773 873 7366

james.campbell@cushwake.com



Jim Harper

+44 (0) 7972 000 161

jrharper@savills.com

Jade Dedman

+44(0) 780 799 9783

jade.dedman@savills.com

Brian Allen

+44(0) 797 200 0215

bmallen@savills.com

Revantage

A BLACKSTONE COMPANY

This proposal is believed to be correct at the date of publication but its accuracy is in no way guaranteed, neither does it form part of any contract. You should take all appropriate professional advice including premises details and financial/rental information. All areas, measurements and dimensions are approximate. CGI renders shown are for illustrative purposes only. Published Q2 2022.

The background features a series of overlapping, wavy lines in three colors: orange, white, and dark blue. The lines are arranged in a pattern that creates a sense of depth and movement, with some lines appearing to curve away from the viewer and others towards it. The overall effect is a dynamic and modern abstract design.

THANK YOU