



EXCELLENT CITY CORE LOCATION

Fitted and furnished offices available to let in the heart of the insurance district. No VAT payable on rent

## Sackville House

143-149 Fenchurch Street, EC3M 6BN

Office

# TO LET

**4,120 sq ft**

(382.76 sq m)

- Redecorated / Recarpeted
- New data cabling installed
- New LED light fittings
- Air conditioning / raised floors
- Meeting rooms and kitchenette on each floor
- Manned reception / 24 hour security
- Shower / bike storage facilities

## Summary

<b>Available Size</b>	4,120 sq ft
<b>Rent</b>	Rent on application
<b>Service Charge</b>	TBC
<b>VAT</b>	Not applicable
<b>Legal Fees</b>	Each party to bear their own costs
<b>EPC Rating</b>	Upon enquiry

## Description

Fitted and furnished offices available to let in the heart of the insurance district. No VAT payable on rent

The available floors at Sackville House provides economical offices benefiting from an excellent City core location. The building benefits from three passenger lifts, 24-hour security and a manned reception.

The fifth and sixth floors have undergone works to deliver fitted and furnished offices with new LED lighting, fitted tea points and new data cabling. The second floor will be available in February 2025.

## Accommodation

The accommodation comprises the following NIA(s):

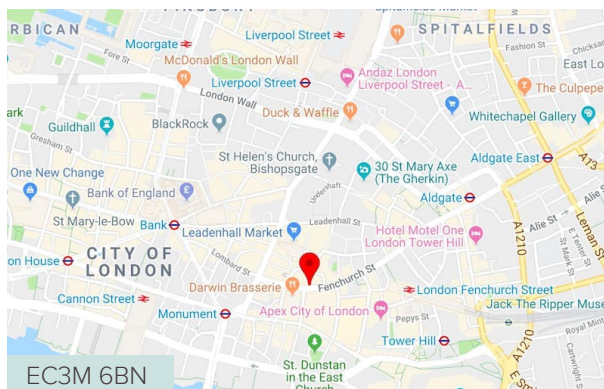
Name	sq ft	sq m	Availability
2nd - Part	4,120	382.76	Coming Soon

## Terms

A new sublease for a term by arrangement up to November 2029, 'outside the 1954 Landlord and Tenant Act' available.

## Microsite

<http://m.search-prop.com/sackville-house-london>



## Viewing / further information

**Veronika Sillitoe**

020 7029 3610 | 07966 029 048

[v.sillitoe@inglebytrice.co.uk](mailto:v.sillitoe@inglebytrice.co.uk)

**Jonty Robinson**

02070293616 | 07748654997

[j.robinson@inglebytrice.co.uk](mailto:j.robinson@inglebytrice.co.uk)

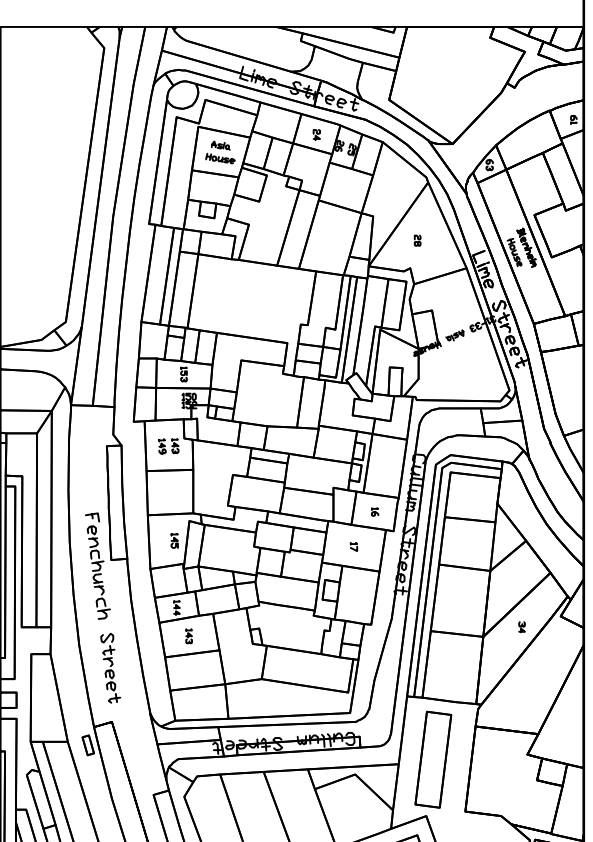
**Ingleby Trice**

10 Foster Lane, London EC2V 6HR

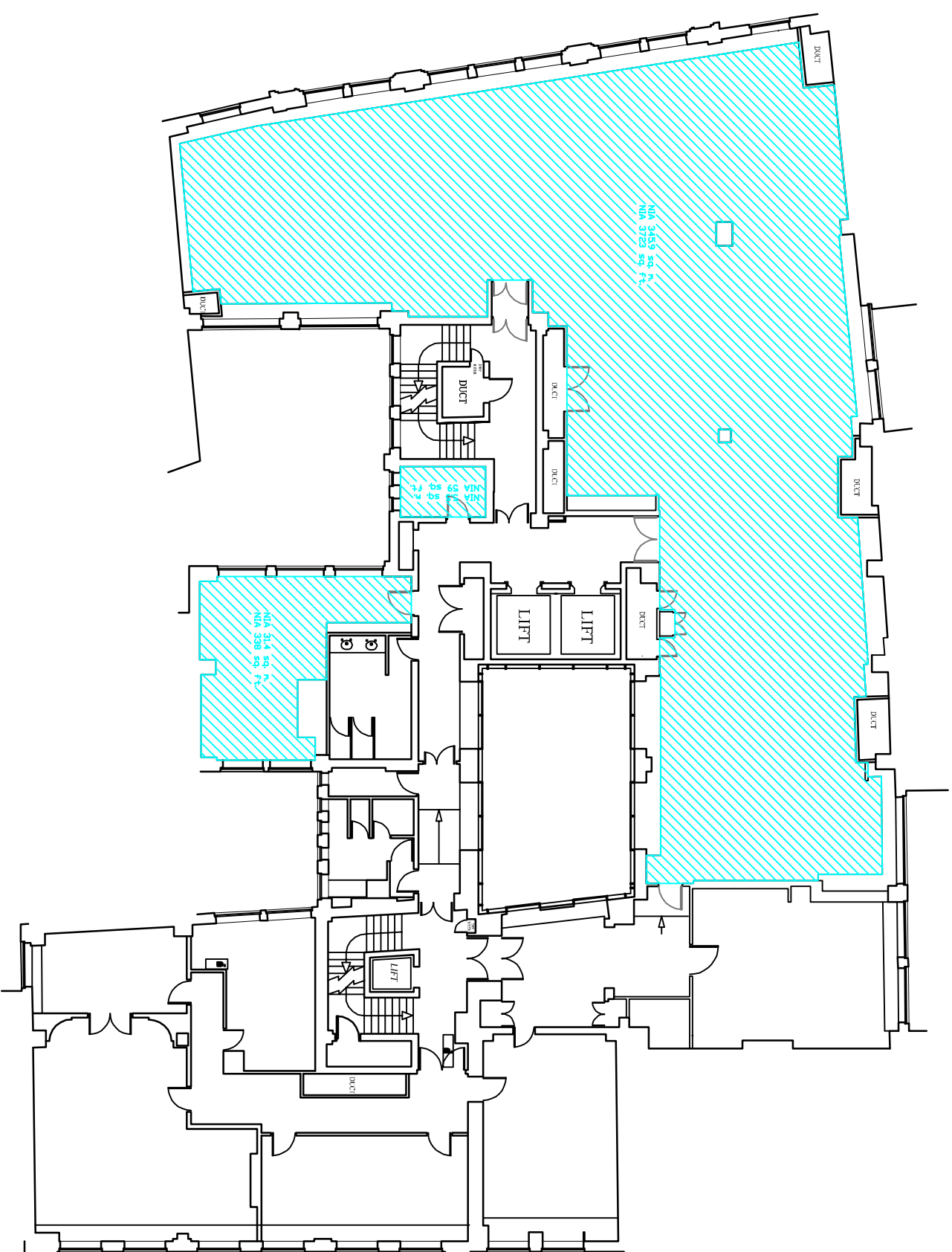
[inglebytrice.co.uk](http://inglebytrice.co.uk)

+44 (0)20 7029 3610

[agency@inglebytrice.co.uk](mailto:agency@inglebytrice.co.uk)



Location Plan 1:1250



Second Floor



Project:	Ingleby Trice Sackville House 143-149 Fenchurch Street London EC3
Drawing Title	Second Floor Plan
CAD Reference	2373-01a
Scale 1	1:200 on A3
Scale 2	1:1250 on A3
<b>Ross Laird</b>	measured surveys
Ross Laird Limited 5 Lower King Street, Royston, Herts SG8 5AL Tel : 01763 249949 e-mail : rosslaird@btinternet.com www.rosslaird.co.uk	
Date	16-05-2014
Revisions	

ALL DIMENSIONS UNLESS OTHERWISE SPECIFIED ARE IN METERS  
 ALL DIMENSIONS GIVEN TO FACE UNLESS OTHERWISE SPECIFIED  
 ALL DIMENSIONS GIVEN TO CENTERLINE UNLESS OTHERWISE SPECIFIED  
 ALL DIMENSIONS GIVEN TO CENTERLINE UNLESS OTHERWISE SPECIFIED  
 ALL DIMENSIONS GIVEN TO CENTERLINE UNLESS OTHERWISE SPECIFIED