

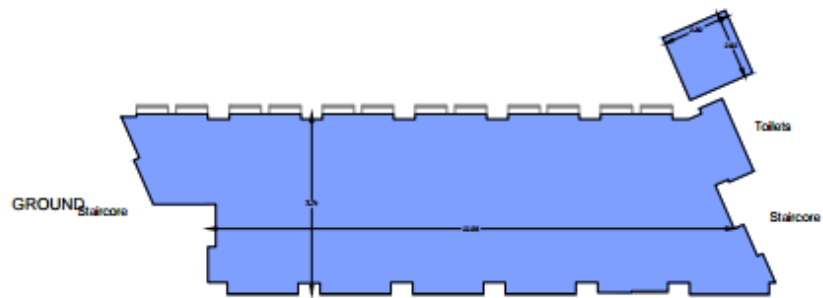
10-18 VESTRY STREET

LONDON, N1.

Ground Floor Net Internal Area Plan

	OFFICE	193.3 sq m	2081 sq ft
-------------------------------------------------------------------------------------	--------	------------	------------

TOTAL AREA: 193.3 sq m 2081 sq ft



VESTRY STREET

Note:

This drawing indicates the extent of the areas quoted, produced to an accuracy commensurate with standard presentation scales. It is held in a scaled digital CAD format.

Drg No. LF2257-NIA-10VS-AG

Issue A

June 2019

Scaled for presentation - 1:200 @ A3