

ST.
KATHARINE
DOCKS
LONDON



Contents

01 Work on water

02 Amenity

03 Area

04 Location & Transport

05 International House

06 Ivory House

07 Devon House

08 Contact



Tranquil and serene, the docks offer a relaxed atmosphere that stands in sharp contrast to the noise and disruption of London's other commercial districts. With its exciting mix of outdoor dining options, St Katharine Docks attracts over five million visitors annually.

Work on water



EST. 1828

INTERNATIONAL HOUSE

ST. KATHARINE DOCKS

Floor	sq ft	sq m
Fourth floor (North)	9,307	865
Fourth floor (South)	16,509	1,533
3rd floor (South)	15,227	1,415
1st floor, Suite 8	1,793	167
Part Mezzanine (North)	9,799	910
Total	52,635	4,890

Figures showing lettable areas.

EST. 1853

IVORY HOUSE

ST. KATHARINE DOCKS

Floor	sq ft	sq m
Part Mezzanine offices	6,096	566
Total	6,096	566

Figures showing lettable areas.

EST. 1989

DEVON HOUSE

ST. KATHARINE DOCKS

Floor	sq ft	sq m
Fifth floor	3,605	335
Fourth floor	10,679	992
Third floor	18,617	1730
Total	32,901	3057

Figures showing lettable areas.

Life on the Marina



A little taster

Emilia's Crafted Pasta



Bravas Tapas



The Melusine



Kilikya's



Honest Burger

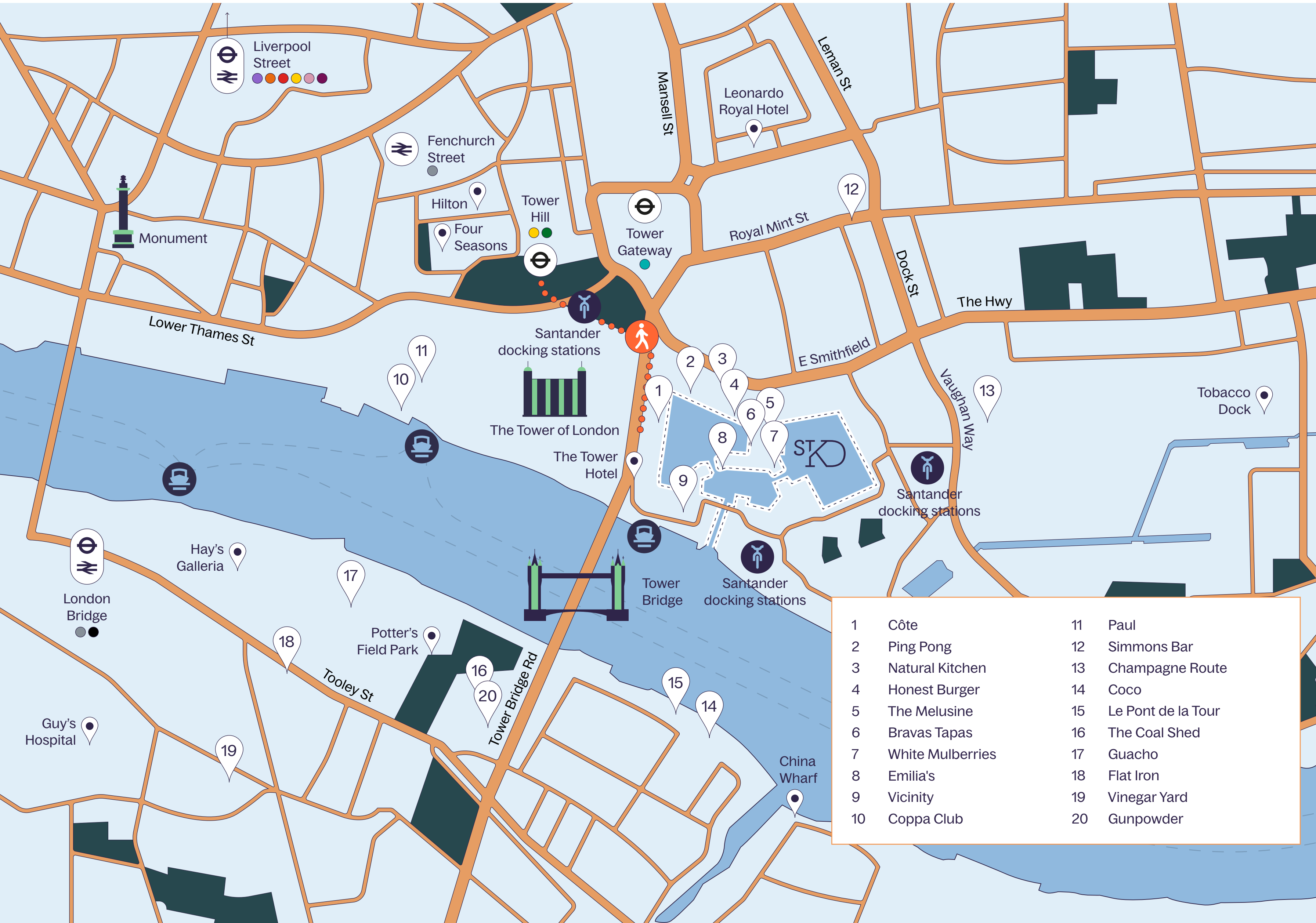


White Mulberries



The Dickens Inn

Area



- | | | | |
|----|------------------|----|--------------------|
| 1 | Côte | 11 | Paul |
| 2 | Ping Pong | 12 | Simmons Bar |
| 3 | Natural Kitchen | 13 | Champagne Route |
| 4 | Honest Burger | 14 | Coco |
| 5 | The Melusine | 15 | Le Pont de la Tour |
| 6 | Bravas Tapas | 16 | The Coal Shed |
| 7 | White Mulberries | 17 | Guacho |
| 8 | Emilia's | 18 | Flat Iron |
| 9 | Vicinity | 19 | Vinegar Yard |
| 10 | Coppa Club | 20 | Gunpowder |

Tube/DLR

The nearest tube is Tower Hill, served by District and Circle lines. Tower Gateway is a short walk away, served by DLR. Tube maps are available at the Marina reception.

Cycling

There are 231 bike spaces at International House and a Santander Cycles docking station at Tower Hill Station and in St. Katharine's Way at Waitrose. Enjoy 30-minute journeys for £1.65 without pre-registration.

Riverboat

Cruise boats and river ferries depart from Tower Bridge Quay and Tower Pier. Thames Clipper (Uber boats) offer ferry services to Greenwich and West London from Tower and London Bridge City piers.

Walking times (from)

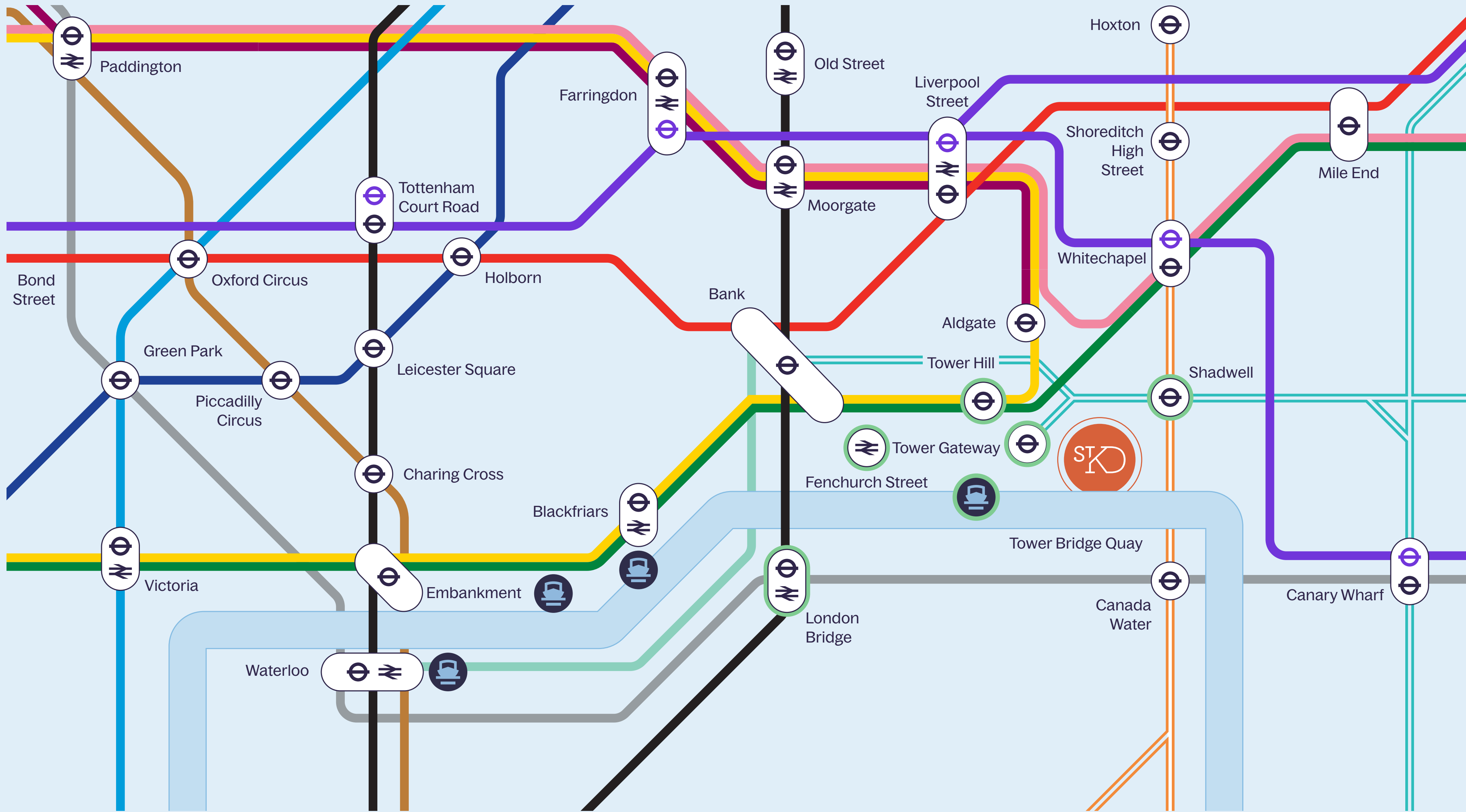
Tower Hill station: 7 mins — Fenchurch Street station: 11 mins
Tower Gateway station: 7 mins — London Bridge station: 12 mins

Taxis

There is a taxi rank at the reception area of The Tower Hotel, near the lock entrance. Taxis are normally available 24 hours a day.

National Rail

London Bridge, Fenchurch Street and Liverpool Street mainline railway stations are all within a 15 minute walk from the docks.



Connectivity

minutes

- 1** Bank/
Monument
- 5** Liverpool
Street
- 7** London
Bridge
- 13** King's Cross
St Pancras
- 14** Victoria

Superb connections

All travel times from Tower Hill station
 Four minute walking time is to the
 St. Katharine Docks Estate

Current availability
1,793–52,635 sq ft

EST. 1828

INTERNATIONAL HOUSE

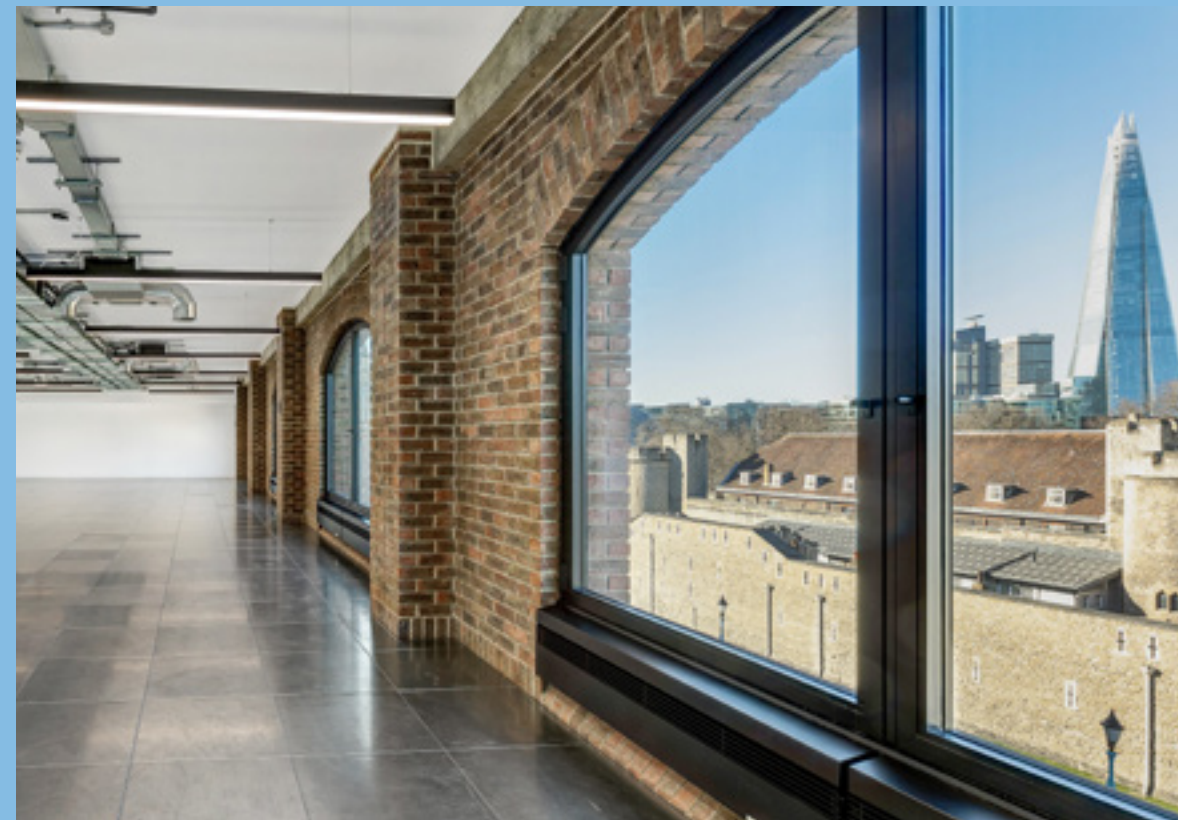
ST. KATHARINE DOCKS



Welcome to
International House



A view-infused workspace International House



Mezzanine International House



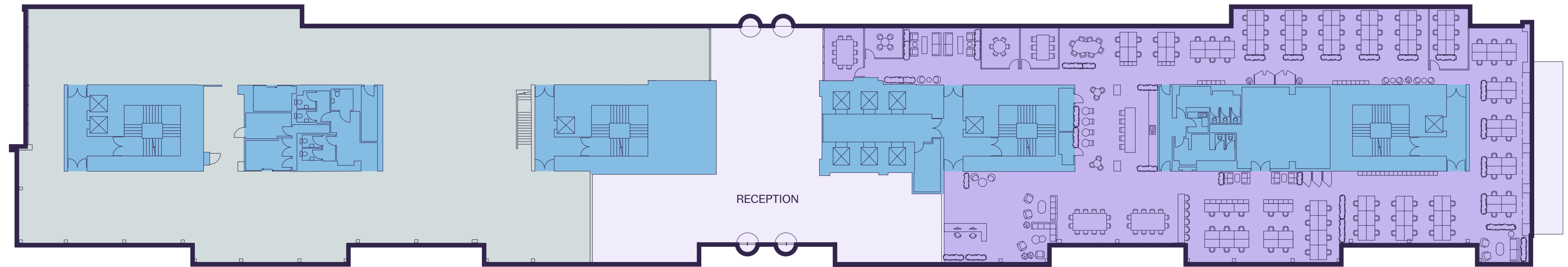
Indicative Only. Not to scale



Views onto The Tower of London

Floor	sq ft	sq m
Fourth floor (North)	9,307	865
Fourth floor (South)	16,509	1,533
3rd floor (South)	15,227	1,415
1st floor, Suite 8	1,793	167
Part Mezzanine (North)	9,799	910
Total	52,635	4,890

Figures showing lettable areas.



Views onto The Marina



- Available unit
- Core/Lifts/WCs
- Existing tenant

First floor International House



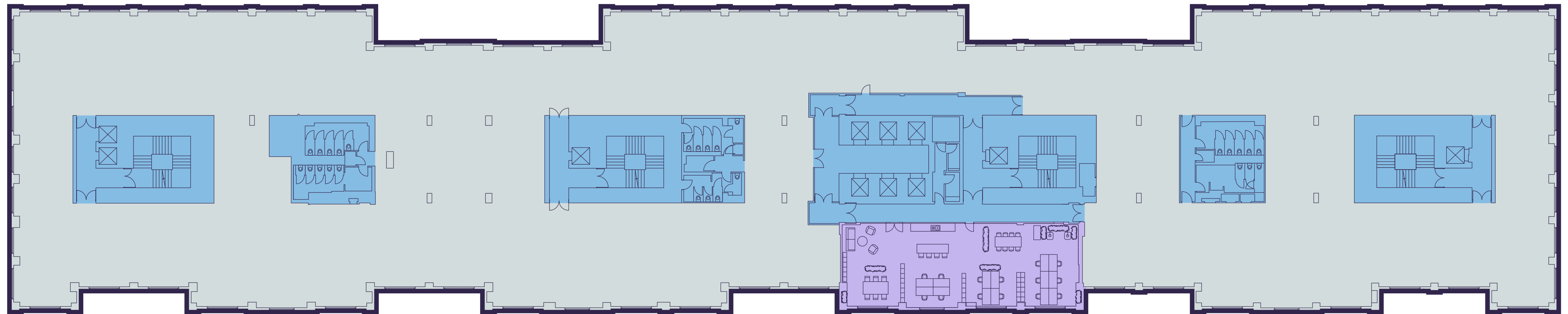
Indicative Only. Not to scale



Views onto The Tower of London

Floor	sq ft	sq m
Fourth floor (North)	9,307	865
Fourth floor (South)	16,509	1,533
3rd floor (South)	15,227	1,415
1st floor, Suite 8	1,793	167
Part Mezzanine (North)	9,799	910
Total	52,635	4,890

Figures showing lettable areas.



Views onto The Marina



- Available unit
- Core/Lifts/WCs
- Existing tenant

Third floor International House



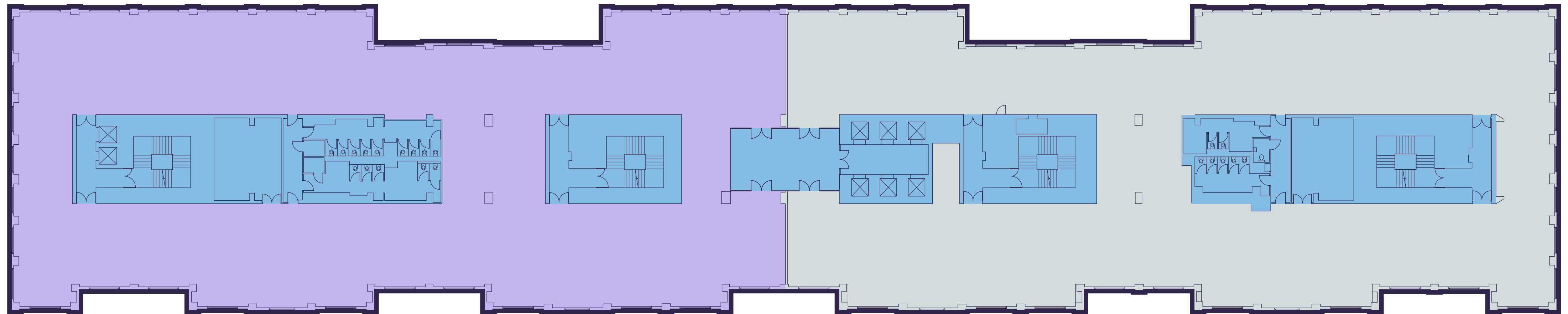
Indicative Only. Not to scale



Views onto The Tower of London

Floor	sq ft	sq m
Fourth floor (North)	9,307	865
Fourth floor (South)	16,509	1,533
3rd floor (South)	15,227	1,415
1st floor, Suite 8	1,793	167
Part Mezzanine (North)	9,799	910
Total	52,635	4,890

Figures showing lettable areas.



Views onto The Marina



- Available unit
- Core/Lifts/WCs
- Existing tenant

Fourth floor International House



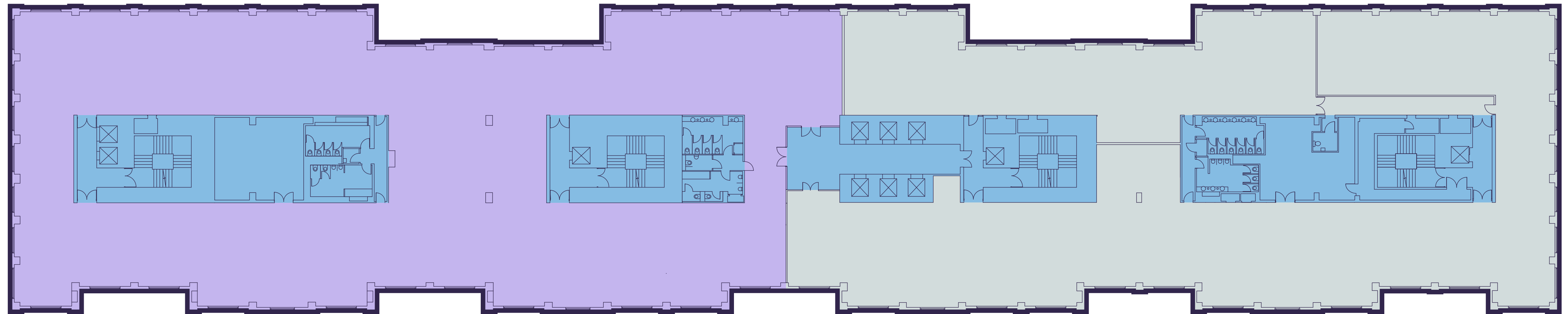
Indicative Only. Not to scale



Views onto The Tower of London

Floor	sq ft	sq m
Fourth floor (North)	9,307	865
Fourth floor (South)	16,509	1,533
3rd floor (South)	15,227	1,415
1st floor, Suite 8	1,793	167
Part Mezzanine (North)	9,799	910
Total	52,635	4,890

Figures showing lettable areas.



Views onto The Marina



- Available unit
- Core/Lifts/WCs
- Existing tenant



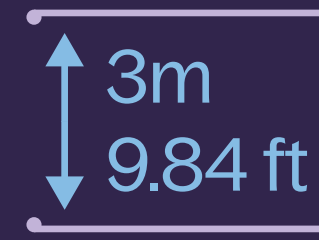
A room with a view



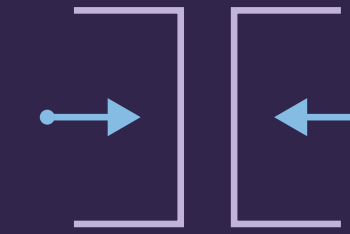
ST
EST.
1828
—

INTERNATIONAL HOUSE

Snapshot



3m floor-ceiling height
with metal tile raised floor



Dual entrance



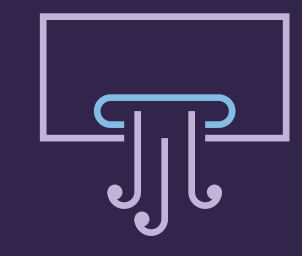
Low profile feature
LED lighting



EPC B



Platinum
Active Score



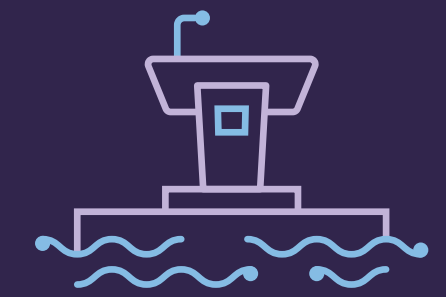
Exposed VRV
air-conditioning system



231 cycle racks,
Brompton bikes and lockers



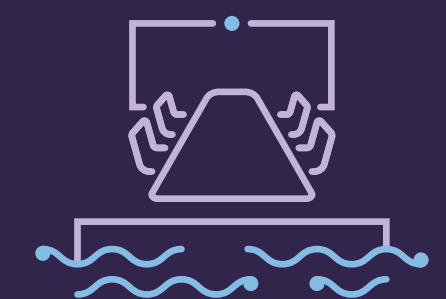
Male & female showers,
lockers & changing rooms



Floating events space
on the Docks



Car parking and motorcycle spaces
available for occupiers across the Docks



Floating meeting room
on the Docks

Current availability
6,096 sq ft



EST. 1853

**IVORY
HOUSE**

ST. KATHARINE DOCKS







Mezzanine floor Ivory House



Indicative Only. Not to scale



- Available
- Core/Lifts/WCs
- Existing tenant

Views onto The Marina

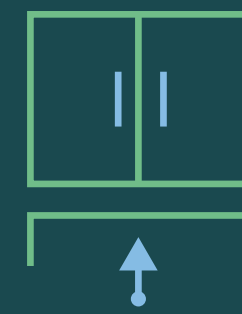
Floor	sq ft	sq m
Part Mezzanine offices	6,096	566
Total	6,096	566

Figures showing lettable areas.

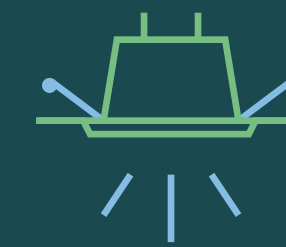
Views onto The Marina



Snapshot



Private entrance



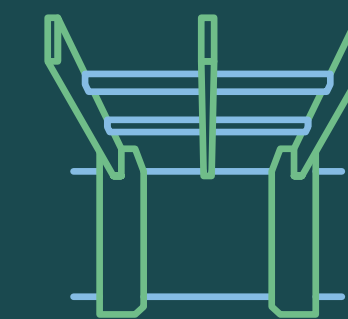
Low profile feature
LED lighting



EPC B



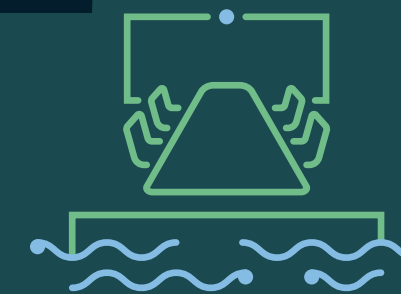
Platinum
Active Score



Exciting warehouse space
with brick coffered ceilings



231 cycle racks,
Brompton bikes and lockers



Floating meeting room
on the Docks



Floating events space
on the Docks



Male & female showers,
lockers & changing rooms



Car parking and motorcycle spaces
available for occupiers across the Docks

Current availability
32,901 sq ft



EST. 1989

DEVON HOUSE

ST. KATHARINE DOCKS









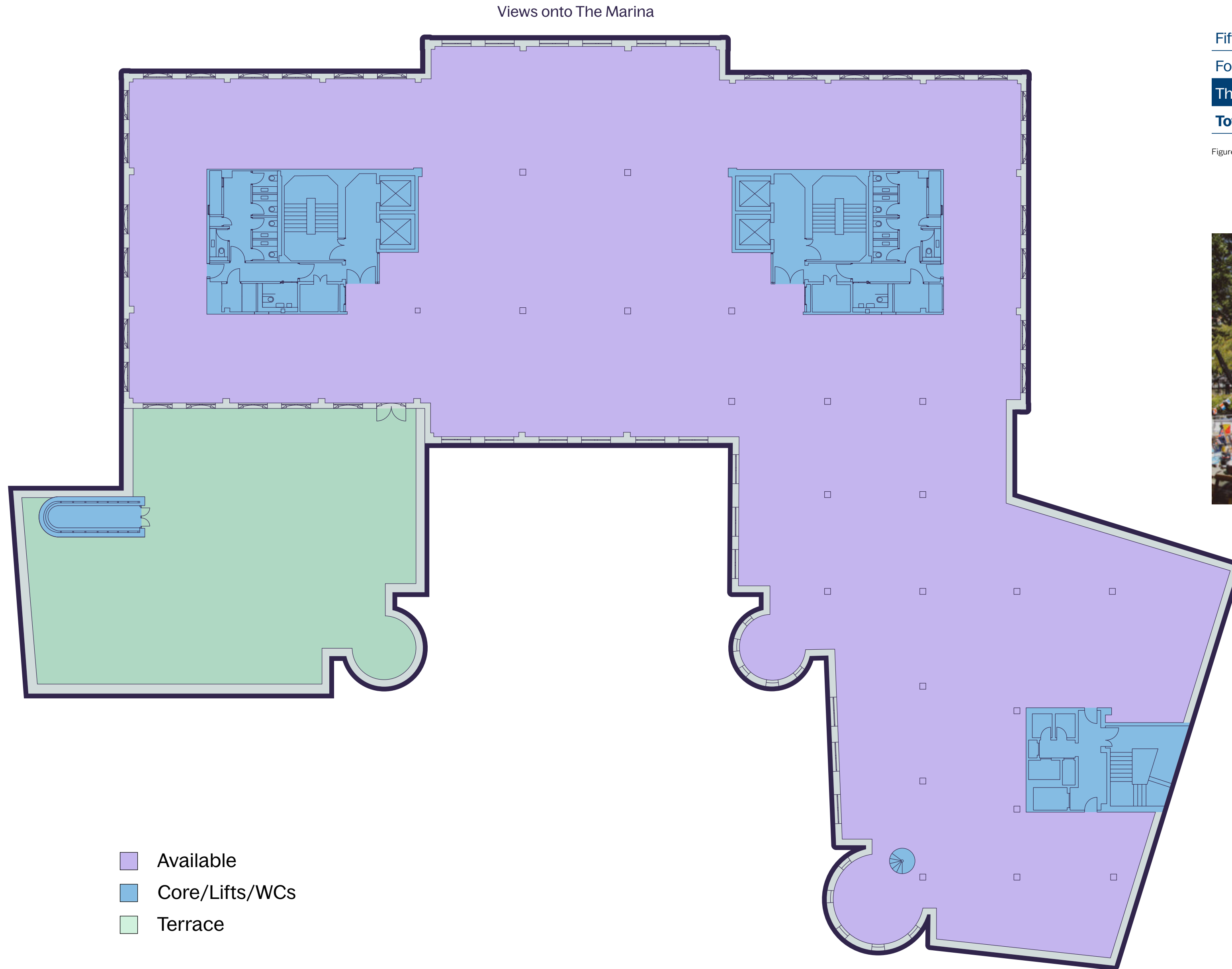


Third floor Devon House

Available as a single unit or floor by floor



Indicative Only. Not to scale



Floor	sq ft	sq m	Terrace (sq ft)
Fifth floor	3,605	335	5,014
Fourth floor	10,679	992	7,294
Third floor	18,617	1730	3,961
Total	32,901	3057	

Figures showing lettable areas.



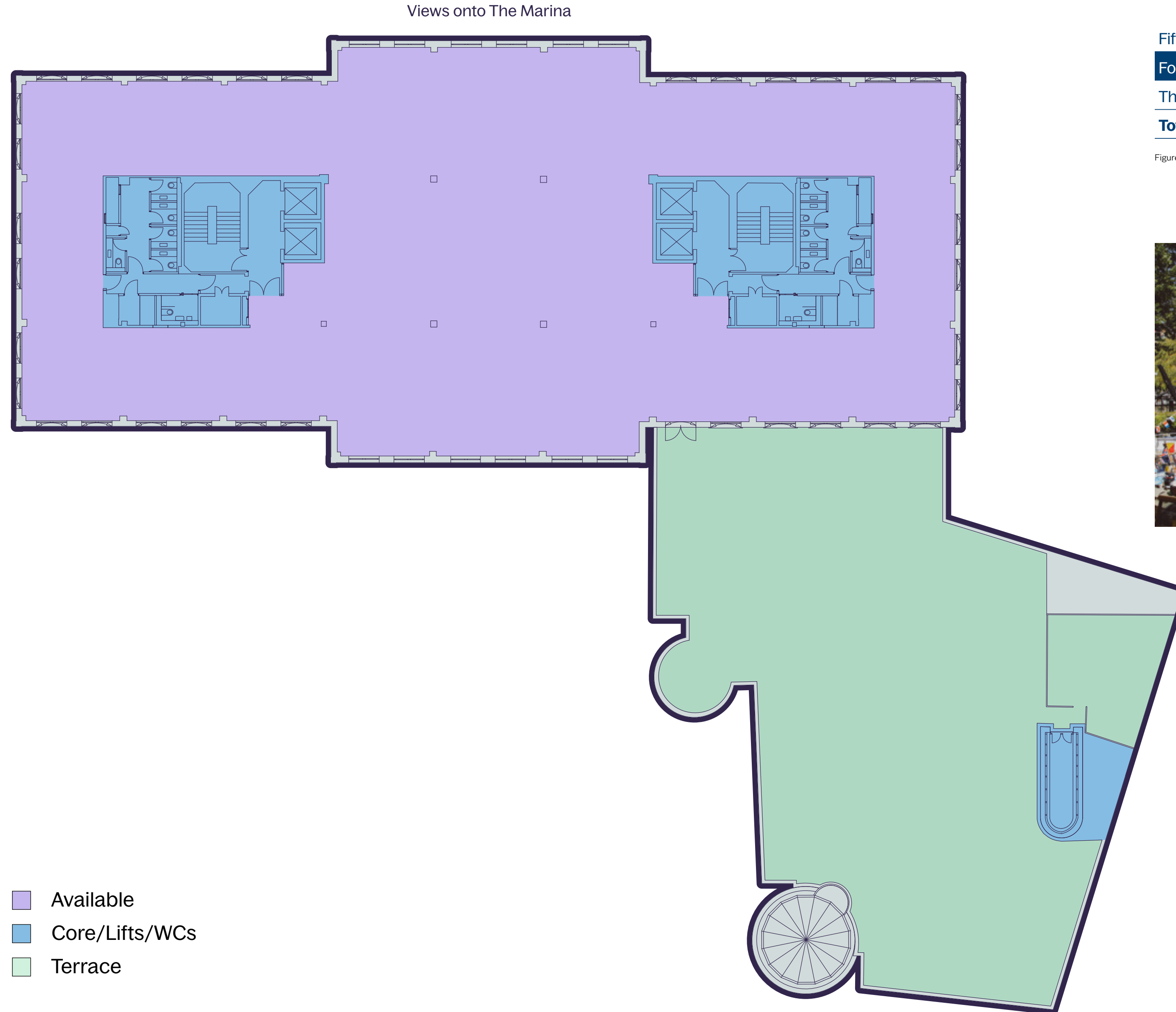
Views onto The Marina

Fourth floor Devon House

Available as a single unit or floor by floor



Indicative Only. Not to scale



Floor	sq ft	sq m	Terrace (sq ft)
Fifth floor	3,605	335	5,014
Fourth floor	10,679	992	7,294
Third floor	18,617	1730	3,961
Total	32,901	3057	

Figures showing lettable areas.



Views onto The Marina

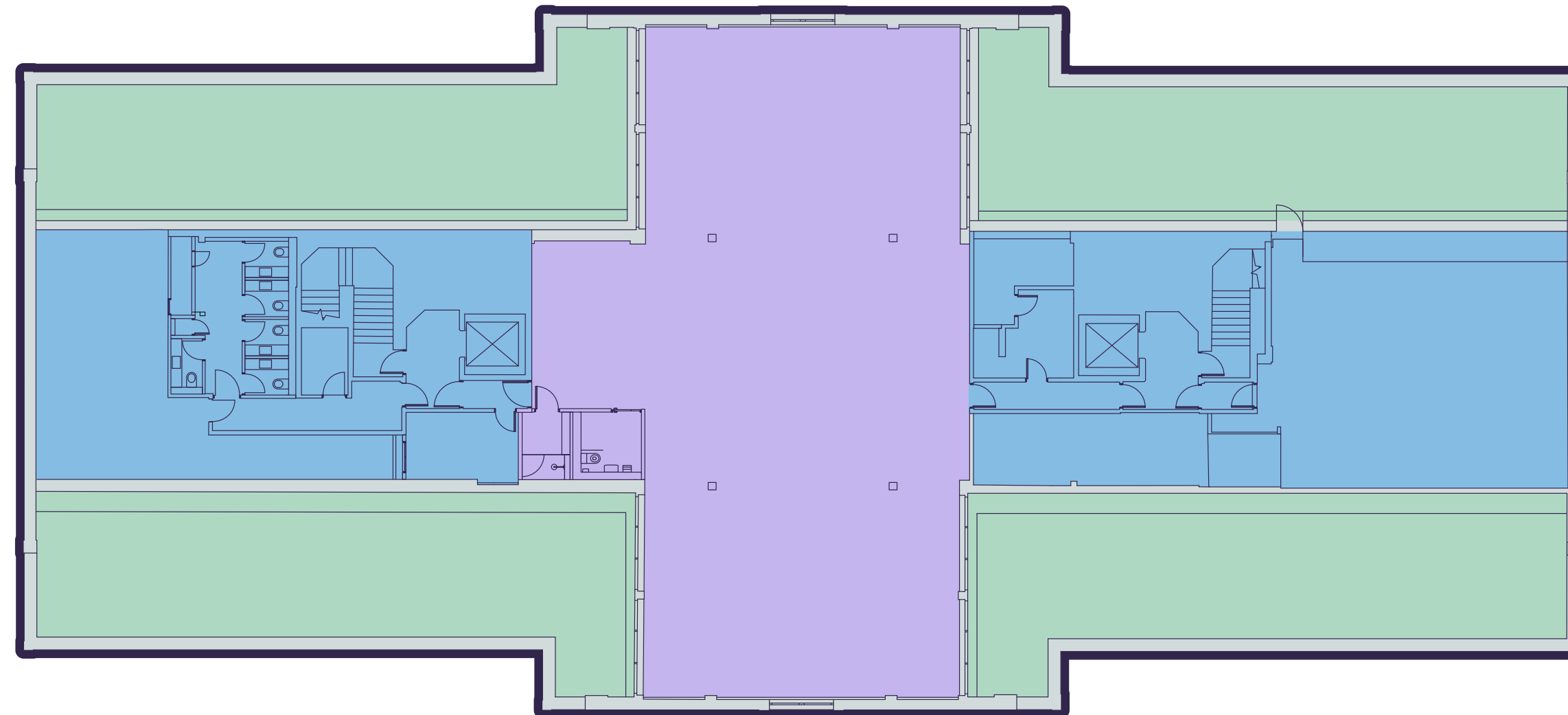
Fifth floor Devon House

Available as a single unit or floor by floor



Indicative Only. Not to scale

Views onto The Marina



- Available
- Core/Lifts/WCs
- Terrace

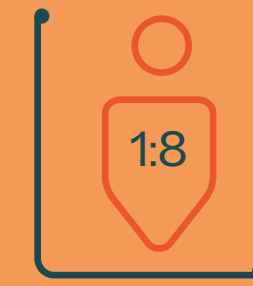
Floor	sq ft	sq m	Terrace (sq ft)
Fifth floor	3,605	335	5,014
Fourth floor	10,679	992	7,294
Third floor	18,617	1730	3,961
Total	32,901	3057	

Figures showing lettable areas.



Views onto The Marina

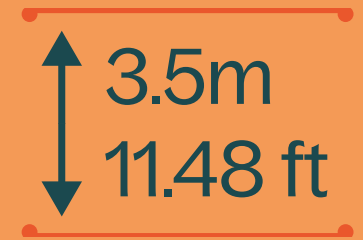
Snapshot



Occupational density,
1 person per 8 sq m



Dedicated on-site café



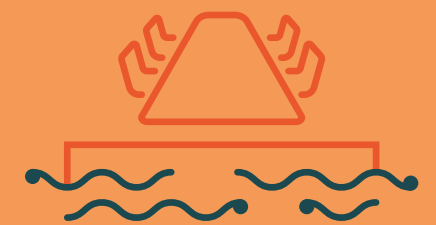
3.2–3.5m office
ceiling heights



21 showers &
190 lockers



Part of a waterside
estate community



Collaborative work space
with direct access
to riverside courtyard



97 bike spaces



Wiredscore
Platinum

Contact

**INGLEBY
TRICE.**

Jake Halstead

j.halstead@inglebytrice.co.uk
07989 481 012

James Heyworth-Dunne

jhd@inglebytrice.co.uk
07779 327 071

Jonty Robinson

j.robinson@inglebytrice.co.uk
07748 654 997

CBRE

David Perowne

david.perowne@cbre.com
07739 814 720

Ben Atwell

ben.atwell@cbre.com
07490 363 111

Hannah Grint

hannah.grint@cbre.com
07545 868 543

 **CUSHMAN &
WAKEFIELD**

George Homer

george.homer@cushwake.com
07584 118 298

Matt Waugh

matt.waugh@cushwake.com
07912 977 980

Andrew Parker

andrew.parker@cushwake.com
07979 516 513

Subject to contract. Ingleby Trice, CBRE and Cushman & Wakefield for themselves and the vendor of this property give notice that these particulars do not form, or form part of, any offer or contract. They are intended to give fair description of the property and whilst every effort has been made to ensure their accuracy this cannot be guaranteed. Any intending purchaser must therefore satisfy themselves by inspection or otherwise. Neither Ingleby Trice, CBRE and Cushman & Wakefield, nor any of its employees, has any authority to make or give any further representations or warranty whatsoever in relation to this property. All prices and rents quoted are net of vat. May 2024