

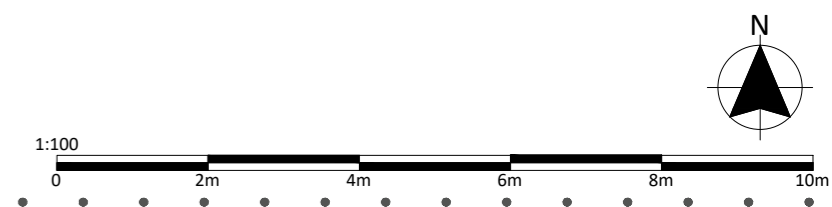
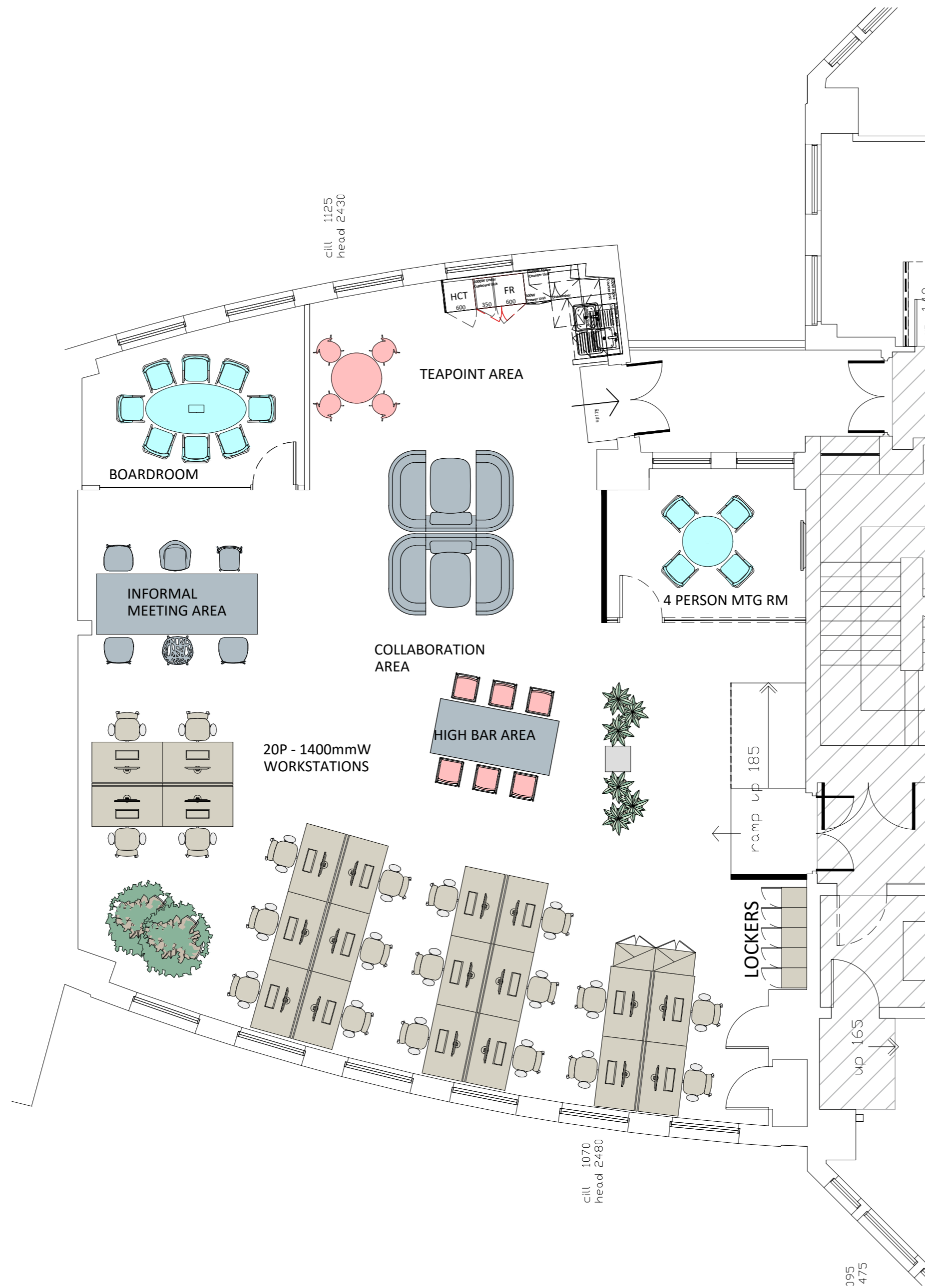
# General Arrangement Layout Lv2W. Aldermary House

BUILDING WORKS KEY  
Existing Building Structure

- 20qty 1400w Workstations
- 06qty Informal Meeting Area
- 06qty Highbar Area
- 02qty Soft Seating Booths

- 8 Person Boardroom
- 4 Person Meeting Room

4 Seated Positions Teapoint Area



### Quality Assurance Procedures

- This drawing may not be copied, shown or given to a third party without express permission from 3E1 Design Ltd.
- Do not scale from this drawing.
- 3E1 Design cannot accept responsibility for the accuracy of scaled plans supplied to us by a third party in hard copy or on disc.
- All design drawings must be signed by the designer as meeting the criteria of the project brief prior to being shown to the client or any external representative of the client.
- All design drawings must be signed off by the client prior to placing any related orders for building works or new furniture, where space planning work has been undertaken by the company.
- A site survey is recommended to be completed by a 3E1 Design representative prior to the placing of any orders, where space planning work has been undertaken by the company.

### Client Details

Aldermary House  
10 - 15 Queen Street  
London EC4N 1TY

### Project Details

Level 2 West

### Drawing Details

General Arrangement Layout  
OPTION 2

Date 21.06.24 Scale 1:75@A2  
Designer MM Checked -  
DWG No. 3469-GA-Lv2W-02

### Notes/ Revisions/ Keys

Rev	Description	Date	Name
A	New teapoint units shown for client review	04.11.24	MM
B	Updated informal spaces for client review	05.11.24	MM

### Company Details

Address  
Unit 121  
Cannon Workshops  
Cannon Drive  
London E14 4AS  
Telephone  
+44 (0)20 7100 1849  
Website  
www.3equals1design.co.uk  
Company Number  
07452749  
© Copyright 3equals1 Design Ltd.

