



**7-8**  
**FREDERICK'S**  
**PLACE**

L O N D O N  
E C 2

Newly fitted offices of 1,469 sq. ft  
& 1,849 sq. ft available to let



# FREDERICK'S PLACE

LONDON  
EC 2

## On your doorstep

All within a 10 min walk

ON YOUR DOORSTEP

GALLERY

SPECIFICATION

AVAILABILITY

CONTACT

Frederick's Place brings with it all the benefits of being located in the heart of the Square Mile.

Next door to London's most iconic landmark, St Paul's Cathedral, the immediate area is spoilt for choice with the best of retail, leisure and easy access to all of London.



105

Restaurants



05

Museums



91

Bars & Pubs



04

Art Galleries



06

Parks & Gardens



18

Gyms

# FREDERICK'S PLACE

LONDON  
EC 2

ON YOUR DOORSTEP

GALLERY

SPECIFICATION

AVAILABILITY

CONTACT



Exterior



# FREDERICK'S PLACE

LONDON  
EC 2

ON YOUR DOORSTEP

GALLERY

SPECIFICATION

AVAILABILITY

CONTACT





# FREDERICK'S PLACE

LONDON  
EC 2

ON YOUR DOORSTEP

GALLERY

SPECIFICATION

AVAILABILITY

CONTACT



Reception



# FREDERICK'S PLACE

LONDON  
EC 2

ON YOUR DOORSTEP

[GALLERY](#)

[SPECIFICATION](#)

[AVAILABILITY](#)

[CONTACT](#)



Third floor office (meeting room)



# FREDERICK'S PLACE

LONDON  
EC2

ON YOUR DOORSTEP

[GALLERY](#)

[SPECIFICATION](#)

[AVAILABILITY](#)

[CONTACT](#)



Third floor office (open plan)



# FREDERICK'S PLACE

LONDON  
EC 2

ON YOUR DOORSTEP

GALLERY

SPECIFICATION

AVAILABILITY

CONTACT



Third floor office (library)



# FREDERICK'S PLACE

LONDON  
EC 2

ON YOUR DOORSTEP

[GALLERY](#)

[SPECIFICATION](#)

[AVAILABILITY](#)

[CONTACT](#)



Third floor office (kitchen)



# FREDERICK'S PLACE

LONDON  
EC 2

ON YOUR DOORSTEP

[GALLERY](#)

[SPECIFICATION](#)

[AVAILABILITY](#)

[CONTACT](#)



Third floor office (privacy pod)



# FREDERICK'S PLACE

LONDON  
EC 2

ON YOUR DOORSTEP

**GALLERY**

SPECIFICATION

AVAILABILITY

CONTACT



Facilities



# FREDERICK'S PLACE

LONDON  
EC 2

ON YOUR DOORSTEP

GALLERY

SPECIFICATION

AVAILABILITY

CONTACT



Basement (cycle store)



# Specification

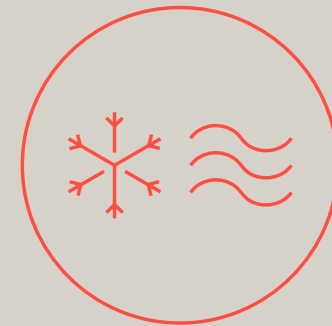
ON YOUR DOORSTEP

GALLERY

SPECIFICATION

AVAILABILITY

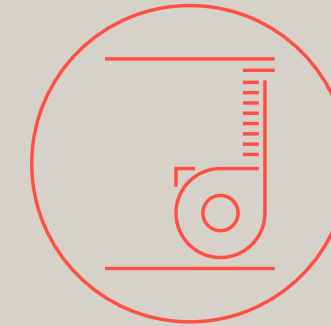
CONTACT



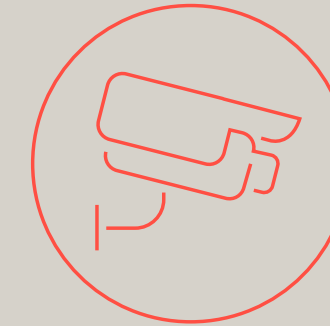
VRF Air  
Conditioning



Access to  
Showers, Bike Racks  
& Changing facilities



Average Floor to Ceiling  
Height 2.87m



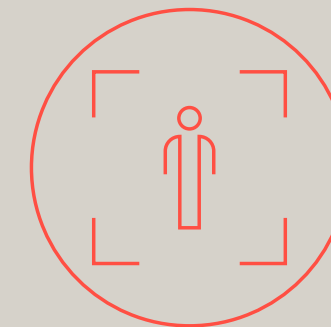
24/7 Estate  
Security



Manned Reception



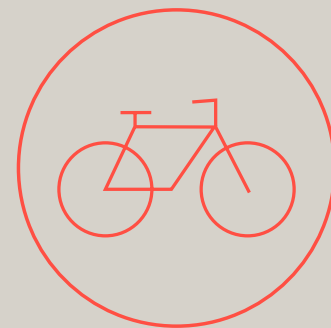
Passenger Lift



1:8 Occupation  
Density



Fully Fitted &  
Furnished



Secure Bike Storage



Fully Cabled



EPC C (56)



# FREDERICK'S PLACE

LONDON  
EC 2

## 3<sup>rd</sup>

### Third Floor

Total area 1,849 sq. ft

#### 3rd Floor fully fitted and furnished

- 1 x 8 Person Meeting Room
- 22 x Open Plan Desks
- 1 x Phone Booth
- 1 x Kitchenette and Break out

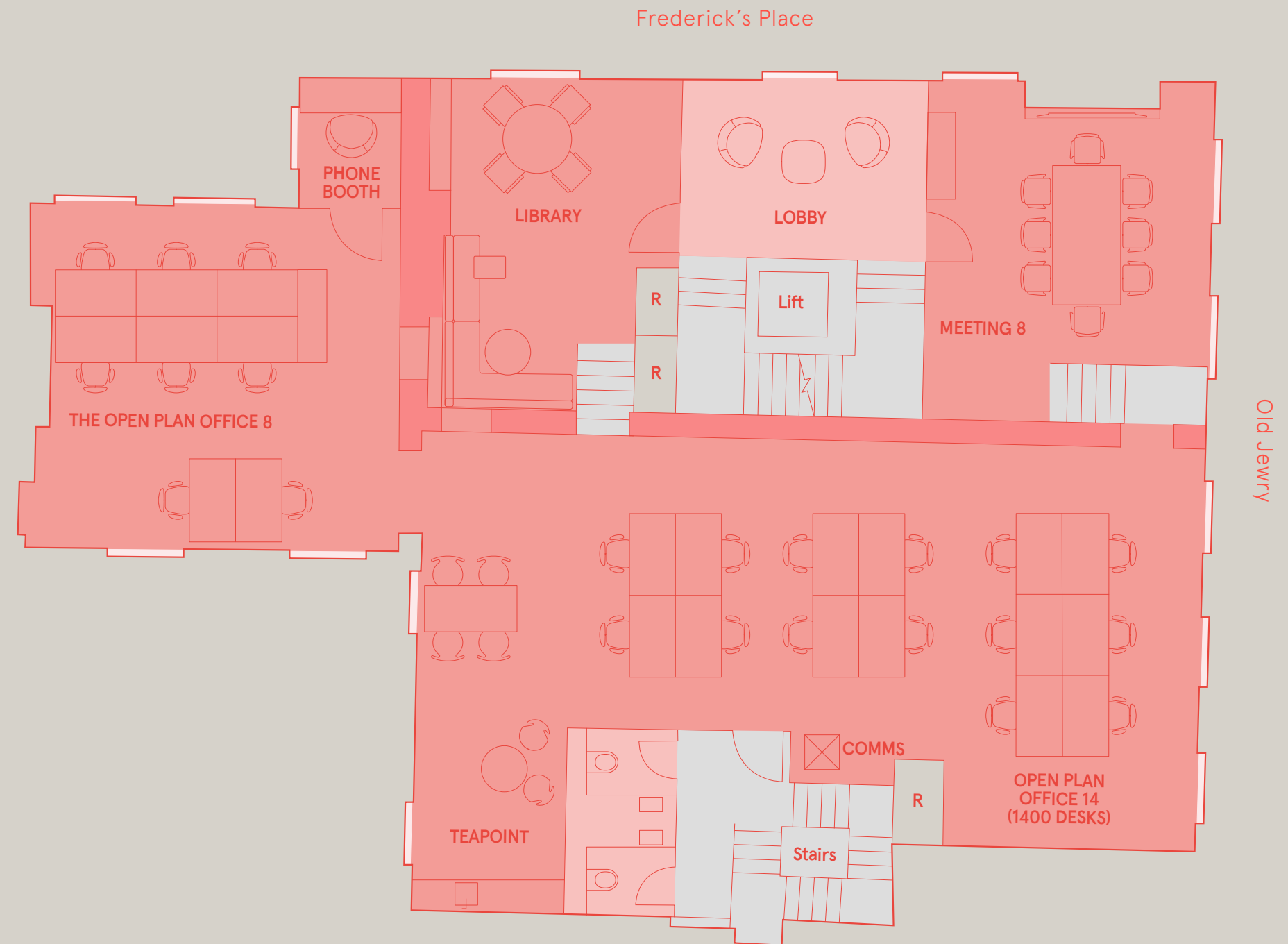
ON YOUR DOORSTEP

GALLERY

SPECIFICATION

AVAILABILITY

CONTACT





# FREDERICK'S PLACE

LONDON  
EC 2

## 4<sup>th</sup>

Fourth Floor  
Total area 1,469 sq. ft

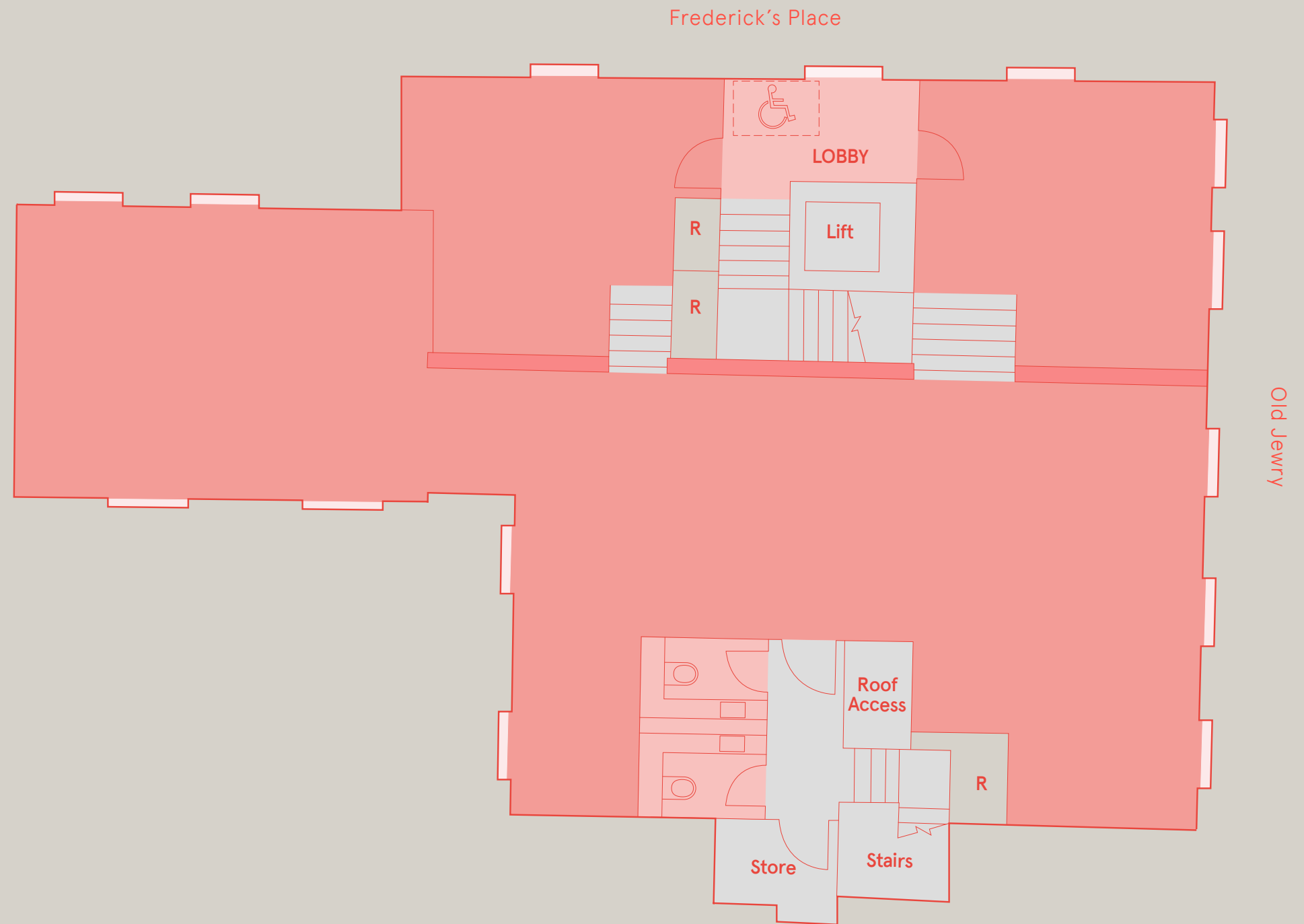
ON YOUR DOORSTEP

GALLERY

SPECIFICATION

AVAILABILITY

CONTACT



● Office Space ● Core



# FREDERICK'S PLACE

LONDON  
EC 2

## Contact

ON YOUR DOORSTEP

GALLERY

SPECIFICATION

AVAILABILITY

CONTACT

FOR ENQUIRIES



**Tom Harvey**  
+44 (0)20 3967 7188  
07790 344111  
tom.harvey@knightfrank.com

**Peter Gray**  
+44 (0)20 7861 1304  
07765 220528  
peter.gray@knightfrank.com



**Veronika Sillitoe**  
+44 (0)20 7029 3619  
07966 029048  
v.sillitoe@inglebytrice.co.uk

**Malcolm Trice**  
+44 (0)20 7029 3610  
07791 049792  
m.trice@inglebytrice.co.uk

These particulars are believed to be correct at the date of publication but their accuracy is in no way guaranteed, neither do they form part of any contract. All areas are approximate. Building images are computer generated and indicative only. Specification and materials shown are indicative only and may be subject to change. Issued September 2024. All office images are computer generated artist impressions and for indicative purpose only.