



Fully fitted 6th floor office with City Cluster views, located within an exclusive private estate off Bishopsgate, close to Liverpool Street

5 St. Helen's Place

EC3A 6AB

Office

TO LET

875 sq ft

(81.29 sq m)

- Available January 2026
- Fully fitted and to be furnished with a meeting room / exec office and 8 desks
- High quality kitchenette, raised access floor and LED lighting
- Secure bike storage and shower facilities on the estate
- Manned reception and 24/7 access
- Resident Landlord

Summary

Available Size	875 sq ft
Rent	£82.50 per sq ft pax
Rates Payable	£30.42 per sq ft estimated pa (26/27)
Service Charge	£18 per sq ft est pa
Car Parking	N/A
Legal Fees	Each party to bear their own costs
EPC Rating	B

Description

5 St. Helen's Place is located within a private estate, accessed from Bishopsgate through a manned and gated portico with 24/7 access.

The 6th floor offices offer an occupier the opportunity to acquire a fitted out office in a prime City core location on flexible terms direct from the landlord, the Leathersellers Livery Company.

Location

The building is located in the heart of the City's Tower Cluster, with Lloyd's of London, Bank, Leadenhall Market and The Royal Exchange easily accessible. Liverpool Street, Monument and Cannon Street stations are all within a short walk away, providing Mainline, Underground, and Elizabeth Line services.

Accommodation

The accommodation comprises the following areas:

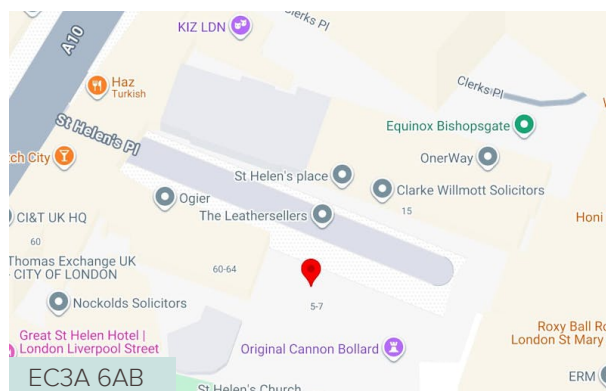
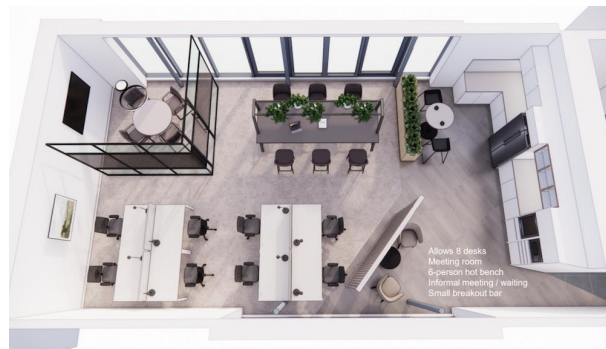
Name	sq ft	sq m	Rent (sq ft)	Rates Payable (sq ft)	Service Charge (sq ft)	Total month	Total year	Availability
6th	875	81.29	£82.50	£30.42	£18	£9,546.25	£114,555	Coming Soon
Total	875	81.29	£82.50	£30.42	£18	£9,546.25	£114,555	

Viewings

Viewings by prior arrangement, through the sole letting agents Ingleby Trice.

Terms

A new lease direct from landlord is available for a term by arrangement.



Viewing / further information

Teddy Toalster

07889 848150

t.toalster@inglebytrice.co.uk

Malcolm Trice

07791 049792

m.trice@inglebytrice.co.uk

Jonty Robinson

02070293616 | 07748654997

j.robinson@inglebytrice.co.uk

Ingleby Trice

10 Foster Lane, London EC2V 6HR

inglebytrice.co.uk

+44 (0)20 7029 3610

agency@inglebytrice.co.uk